

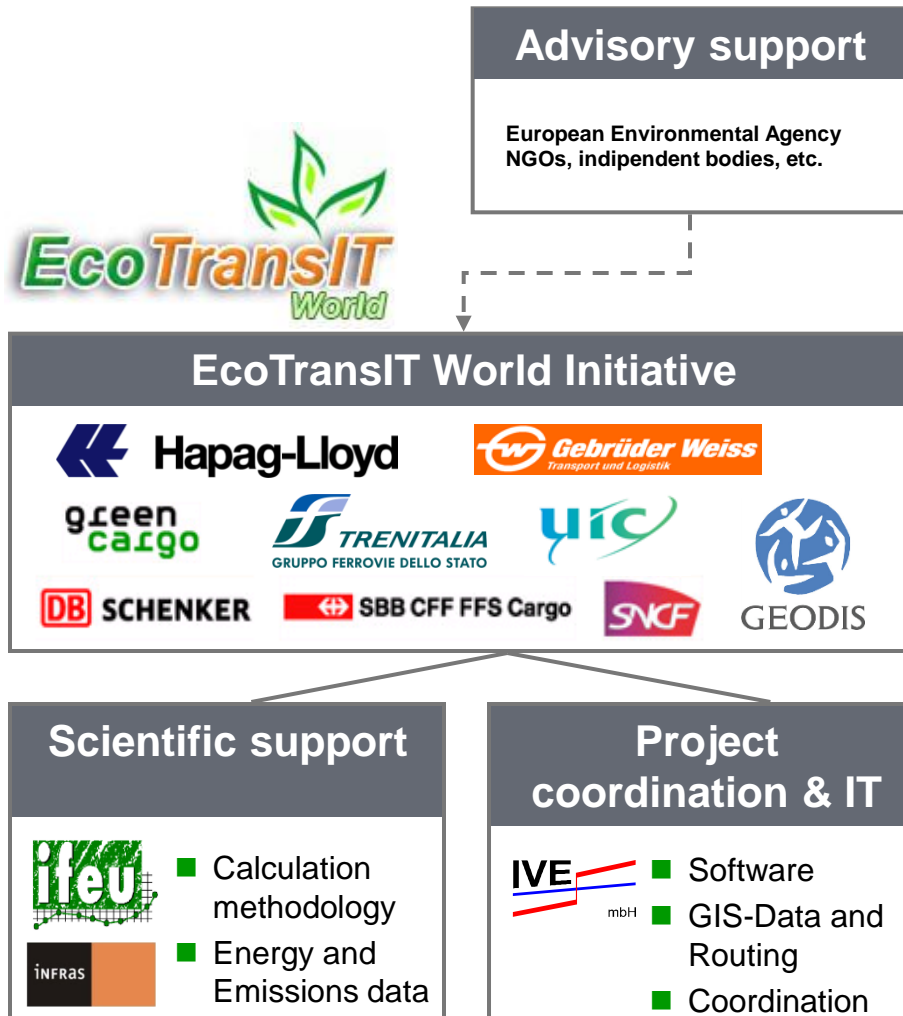
## ***”EcoTransIT World – Supporting Green Logistics“***

Dr. Libor Lochman - Executive Director, CER

Brussels, December 3 2013



# A multimodal world-wide transport chain tool



## What is it?

- web-based **multimodal** tool to support users in calculating the **environmental impact of freight transport**
- Target audience are **logistics service providers, shippers, carriers**
- Relevant determining factors: **energy consumption, carbon dioxide, emissions**

...

- 1998** Start of the work
- 2003** Release of the first version for comparison of European freight transports
- 2006** Introduction of GIS-based routing
- 2008** TERM Report 2007 of European Environment Agency: EcoTransIT as "**good practice**" example
- 2009** Official Partner of the Sustainable Energy Europe Campaign
- 2010** **Launch of global version and business solutions**

# Multimodal Business Solutions for carriers, forwarders and shippers



## Members and Users:

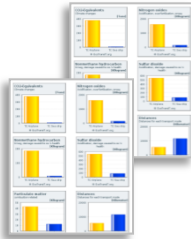


# EcoTransIT World Structure

## Target audience:

companies, logistics operators, carriers, shippers, decision-makers, NGOs, etc.

## The tool:

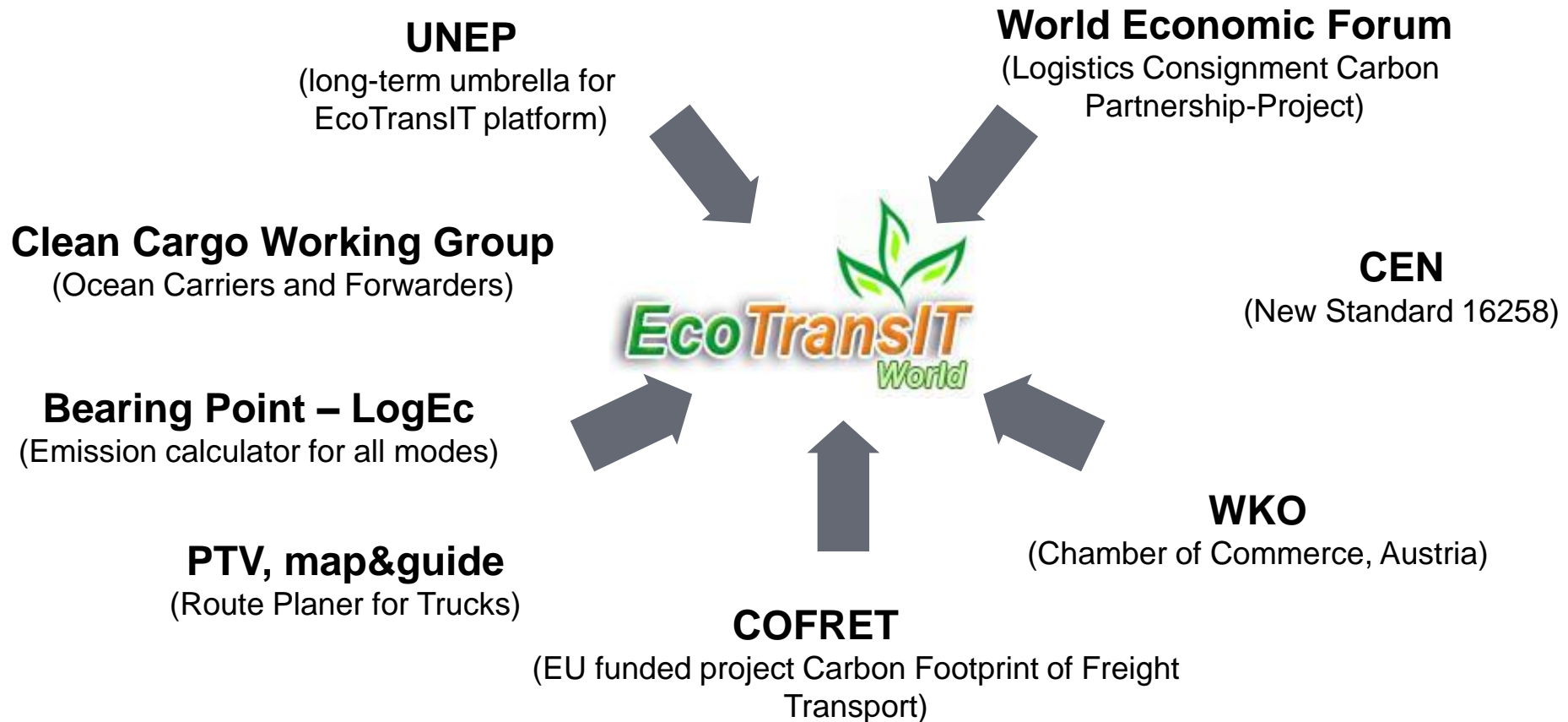


## EcoTransIT World

### Objectives

- **Calculate, measure and reduce** worldwide impacts of the transport chains
- **Corporate Communication** on GHG information
- **Benchmark on** the impact of new transport chains

# EcoTransIT – part of a broader network



# EcoTransIT World calculation principle

## – on shipment basis!



A multimodal emission calculation tool that works for:

- for **any individual shipment worldwide**  
including empty trips and load factors
- for **different types of goods**  
volume, average, bulk in kg, t or TEU
- for **all transport modes**  
truck, train, ship, ferry, barge, airplane, intermodal transport
- **Well To Wheel and Well To Tank** results for all determining factors: **Energy, CO<sub>2</sub>, eCO<sub>2</sub>, SO<sub>2</sub>, NO<sub>x</sub>, PM<sub>10</sub>, PM<sub>2.5</sub>, NH<sub>3</sub>, CH<sub>4</sub>, N<sub>2</sub>O, HFC, PFC, GWP, and CONVM**
- for **all types of fuels**: Gasoline, diesel, kerosene, heavy fuel oil, electricity
- for **all types of emission standards**  
Euro 0-5, JP, EPA
- for most common and relevant type of **vehicles**  
**airplanes and ships**

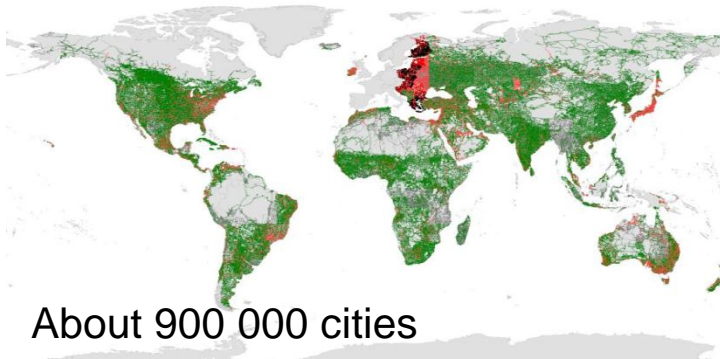


**CEN EN 16258**  
**compliant**



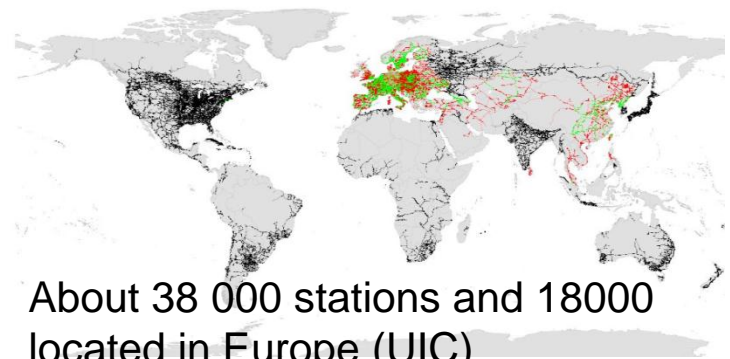
# A multimodal and worldwide Routing Information System

## Road Network



- About 900 000 cities
- > 8 millions of kilometers

## Railway network



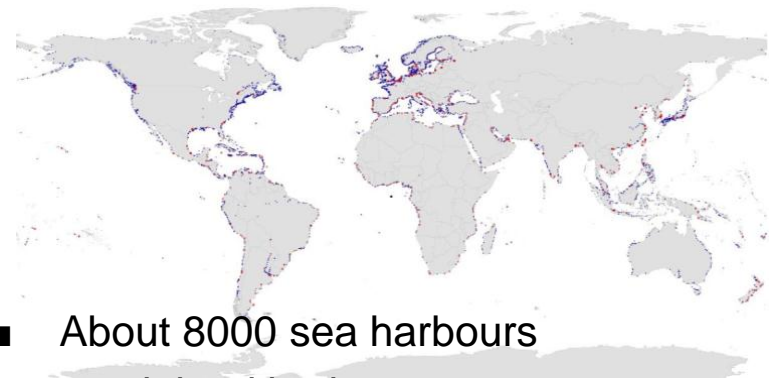
- About 38 000 stations and 18000 located in Europe (UIC)
- > 1,3 millions of railway network

## Air network

964 Airports

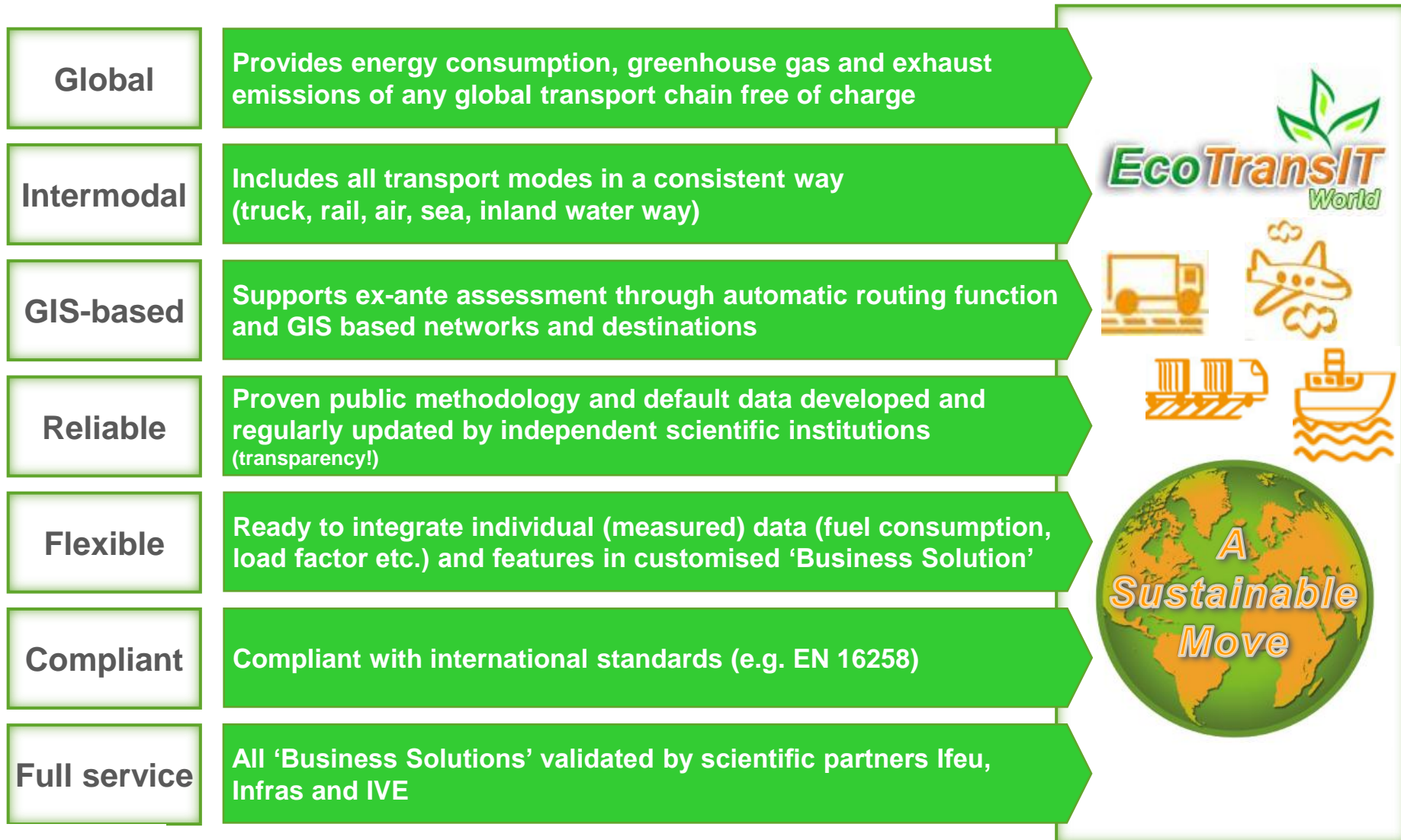
- 122 Big (> 5000 km)
- 296 Big (> 5000 km intercontinental)
- 350 intercontinental (< 5000 km)
- 186 small (< 2500 km)

## IWW and Sea network



- About 8000 sea harbours
- 550 inland harbours

# The 7 assets of EcoTransIT World





# Open and inclusive to other initiatives!

## Global tools

EcoTransIT World

//

NTM

## Harmonization

COFRET

//

World Economic Forum

## Methodology & Initiatives



# Thank you for your attention!

Dr. Libor Lochman - Executive Director, CER

Get in contact with the EcoTransIT World team:

E-mail: [info@ecotransit.org](mailto:info@ecotransit.org)

IVE mbH

EcoTransIT World

Lützerodestrasse

D-30161 Hanover

Germany

